

Biolex MB40



Positive effect of Leiber brewer's yeast cell wall product confirmed in commercial broiler field trial

Brewer's yeast is a high-quality by-product of the brewing industry that is very versatile and has many uses in animal nutrition. In the poultry industry, prebiotic yeast cell wall products in particular are used to support intestinal health and the immune system.

Especially fattening poultry is susceptible to infectious diseases. The intestine is in many cases the main entry point for pathogens. Therefore, it is advisable to use components in the feed that support intestinal integrity. Supplementation with yeast cell walls (Biolex® MB40) leads to various effects in the gastrointestinal tract. These include the prebiotic effect, adsorption of certain mycotoxins and pathogens and enhancement of immunity. All these mechanisms of action lead to an improvement in growth performance and feed conversion, which in turn has a positive effect on profitability.

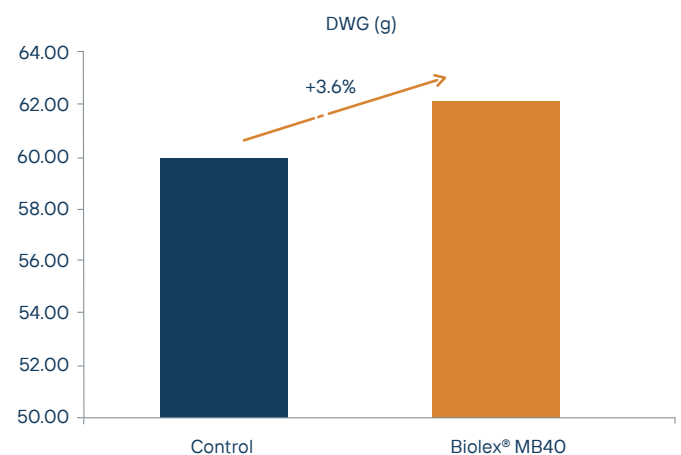
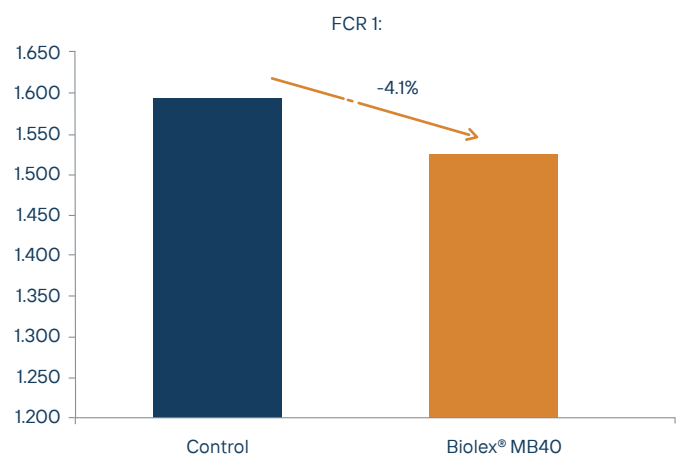
Trial design:

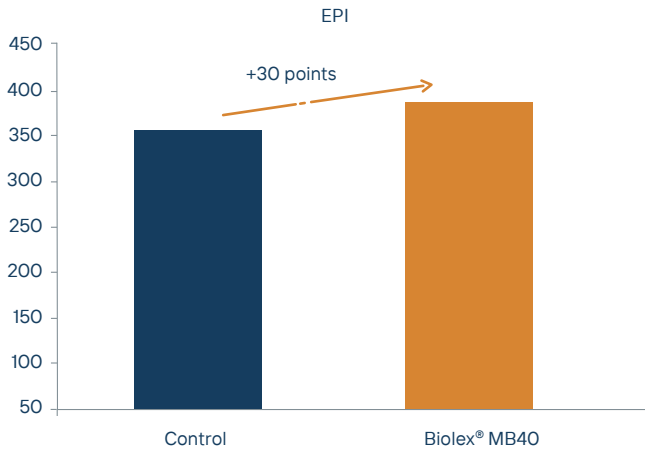
A feeding trial was conducted on a commercial broiler farm in Latvia in March 2022 on a total of 106300 Ross 308 broilers. The average fattening period was 36 days. The initial weight was comparable in both groups, 46g and 46.3g, respectively. The ration of the experimental group differed from the control in all three feeding phases only by the addition of Biolex® MB40 (1kg/t).

Results:

The experimental group had 3.6% higher daily gains and 4.1% improved feed conversion compared to the control. Mortality was also lower in the experimental group than in the control group (-2.2%). The European Production Index (EPI) was increased by 30 points from 359 to 389. Due to the better daily gains only, the ROI was 1:18.

	Control	Biolex® MB40
Animals (number)	52600	53700
Slaughter weight (g)	2201	2310
Daily weight gain (g)	60.03	62.19
Feed conversion ratio 1:	1.595	1.530
Mortality (%)	4.5	4.4
Additional costs (€)/ 1000 broilers		8.00
Surplus revenue (€)/ 1000 broilers (1,356€/kg slaughter weight)		147.00
ROI 1:		18





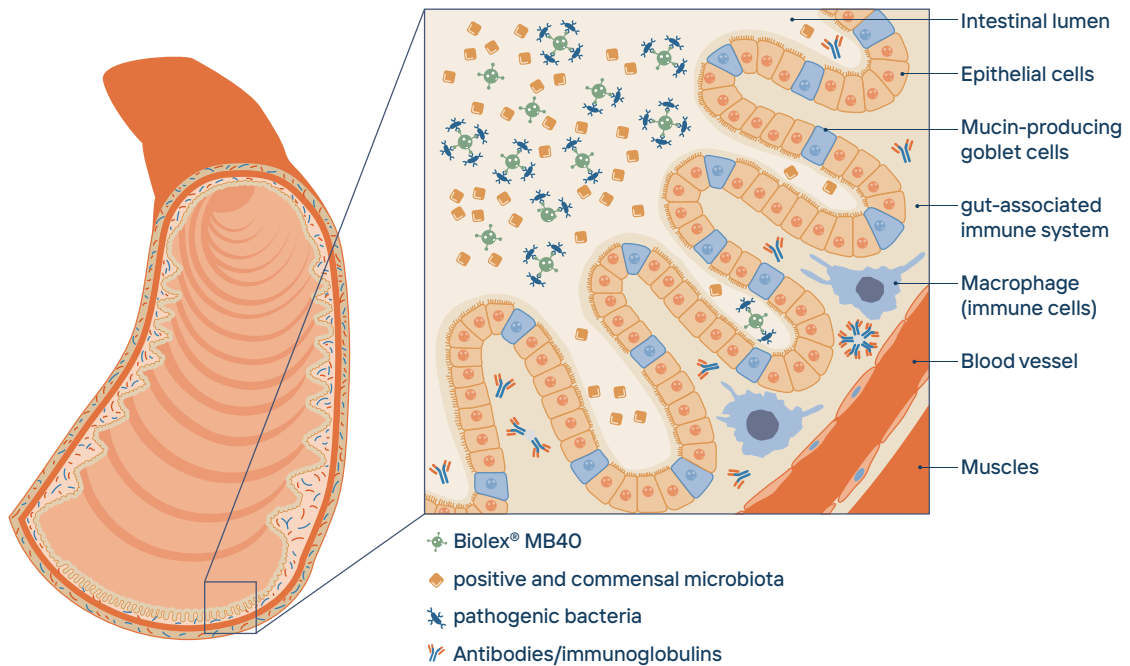
Biolex MB40: Strong bond!

- | Prebiotic effect in the gastrointestinal tract
- | Displaces pathogens and binds mycotoxins
- | Improves intestinal morphology
- | Supports immune system
- | Improves feed conversion and increases gains → Positive effect on profitability

Conclusion:

The use of Biolex® MB40 in broiler production improved performance parameters and increased economical benefit.

Mode of action Biolex® MB40:



We have been upcycling at world-market level since 1954 and keeping the environment and climate in mind.