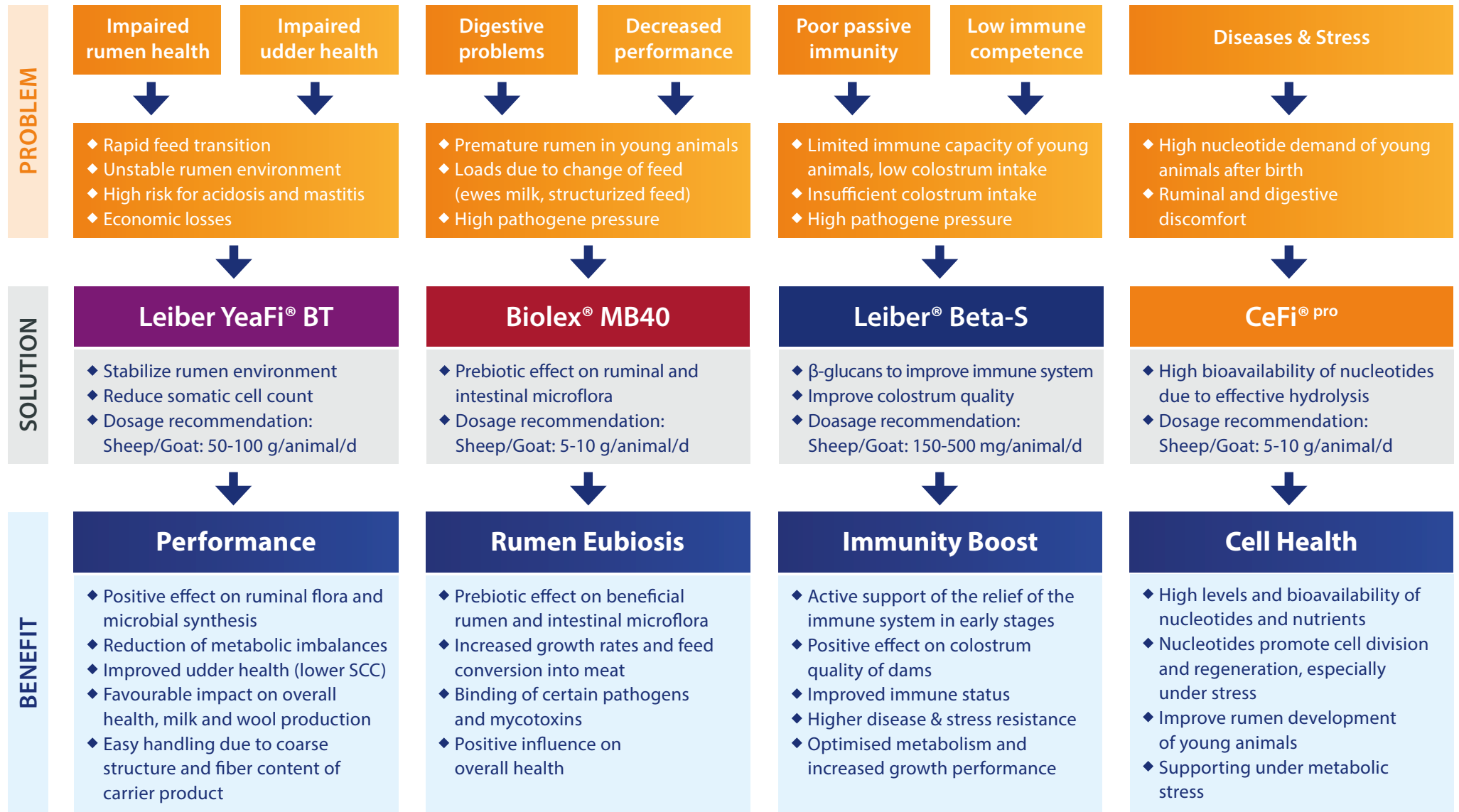


Leiber YeaFi® BT, Biolex® MB40, Leiber® Beta-S and CeFi® pro

General recommendation guideline for conceptual use in sheep and goat



For more information please contact:

Dr. Jan Frericks, Technical & Regulatory Services Animal Nutrition • Phone: +49 5461 9303-15 • j.frericks@leibergmbh.de

